



**NUKED** | PRINT AT HOME

©2016 NUKED CARDS, LLC

**Thanks for downloading our game! We think you're gonna like it! Feel free to print out this set. Just do us a favor and don't sell it, okay? If you like the game, share it! It's not going to hurt our feelings. We want as many people as possible to enjoy it, and we hope you're among them.**

**Thanks again.**

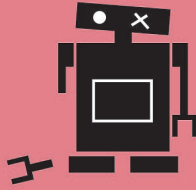


**ROBERT AND PHALLEN  
of Nuked Cards, LLC.**



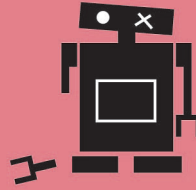
NUKED | PRINT AT HOME

10



10

10



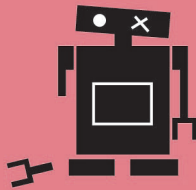
10

20



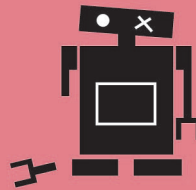
20

10



10

10



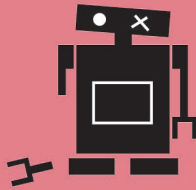
10

20



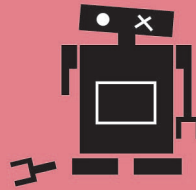
20

10



10

10



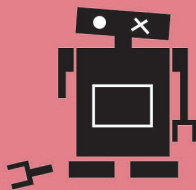
10

20



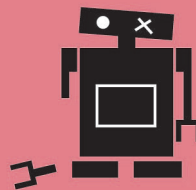
20

10



10

10



10

20



20



PRINT. CUT. PLAY.

[www.NukedCards.com](http://www.NukedCards.com)



**NUKED** | PRINT AT HOME



**NUKED**

©2016 NUKED CARDS, LLC



**NUKED**

©2016 NUKED CARDS, LLC



**NUKED**

©2016 NUKED CARDS, LLC



**NUKED**

©2016 NUKED CARDS, LLC



**NUKED**

©2016 NUKED CARDS, LLC



**NUKED**

©2016 NUKED CARDS, LLC



**NUKED**

©2016 NUKED CARDS, LLC



**NUKED**

©2016 NUKED CARDS, LLC



**NUKED**

©2016 NUKED CARDS, LLC



**NUKED**

©2016 NUKED CARDS, LLC



**NUKED**

©2016 NUKED CARDS, LLC



**NUKED**

©2016 NUKED CARDS, LLC



PRINT. CUT. PLAY.

[www.NukedCards.com](http://www.NukedCards.com)



NUKED | PRINT AT HOME

20



20

20



20

30



30

20



20

20



20

30



30

20



20

30



30

30



30

20



20

30



30

30



30



PRINT. CUT. PLAY.

[www.NukedCards.com](http://www.NukedCards.com)





**NUKED** | PRINT AT HOME



**NUKED**

©2016 NUKED CARDS, LLC



**NUKED**

©2016 NUKED CARDS, LLC



**NUKED**

©2016 NUKED CARDS, LLC



**NUKED**

©2016 NUKED CARDS, LLC



**NUKED**

©2016 NUKED CARDS, LLC



**NUKED**

©2016 NUKED CARDS, LLC



**NUKED**

©2016 NUKED CARDS, LLC



**NUKED**

©2016 NUKED CARDS, LLC



**NUKED**

©2016 NUKED CARDS, LLC



**NUKED**

©2016 NUKED CARDS, LLC



**NUKED**

©2016 NUKED CARDS, LLC



**NUKED**

©2016 NUKED CARDS, LLC



PRINT. CUT. PLAY.

[www.NukedCards.com](http://www.NukedCards.com)



NUKED | PRINT AT HOME

30



30

40



40

50



50

30



30

40



40

50



50

40



40

40



40

60



60

40



40

50



50

60



60



PRINT. CUT. PLAY.

[www.NukedCards.com](http://www.NukedCards.com)



**NUKED** | PRINT AT HOME



**NUKED**  
©2016 NUKED CARDS, LLC



**NUKED**  
©2016 NUKED CARDS, LLC



**NUKED**  
©2016 NUKED CARDS, LLC



**NUKED**  
©2016 NUKED CARDS, LLC



**NUKED**  
©2016 NUKED CARDS, LLC



**NUKED**  
©2016 NUKED CARDS, LLC



**NUKED**  
©2016 NUKED CARDS, LLC



**NUKED**  
©2016 NUKED CARDS, LLC



**NUKED**  
©2016 NUKED CARDS, LLC



**NUKED**  
©2016 NUKED CARDS, LLC



**NUKED**  
©2016 NUKED CARDS, LLC



**NUKED**  
©2016 NUKED CARDS, LLC

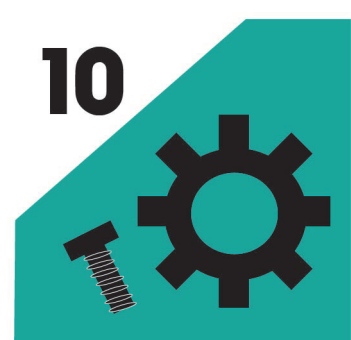
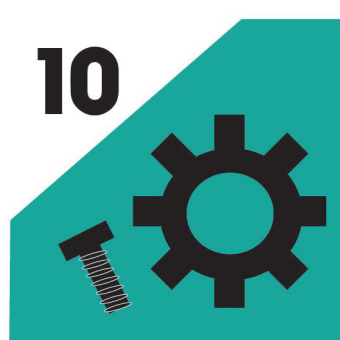
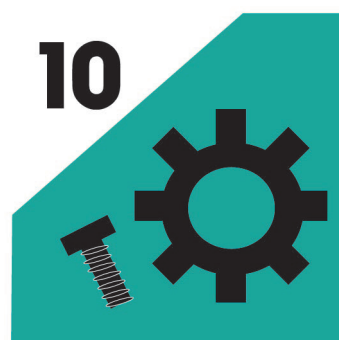
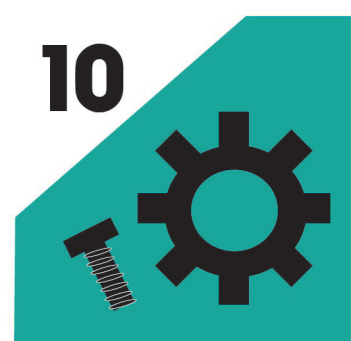
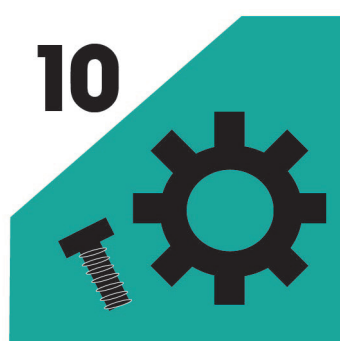
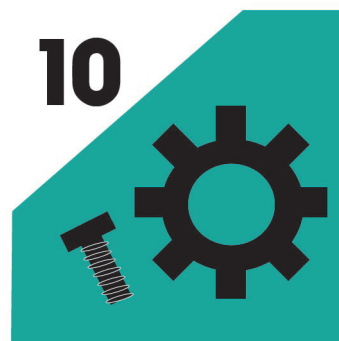
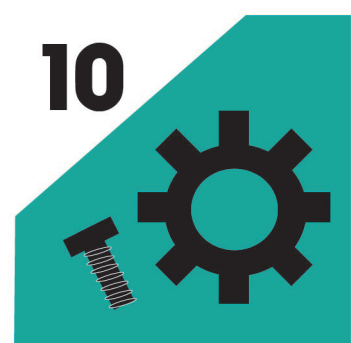
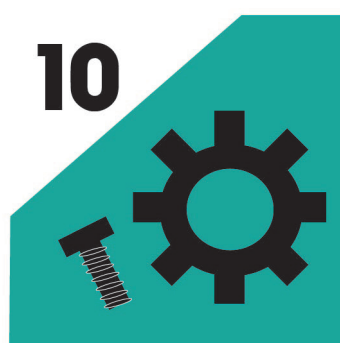
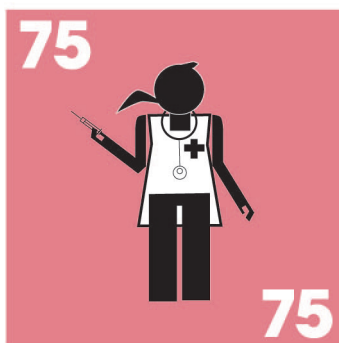
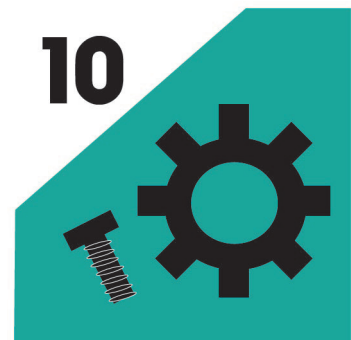
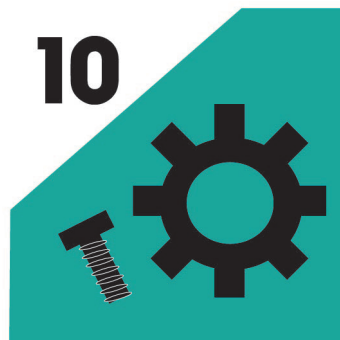
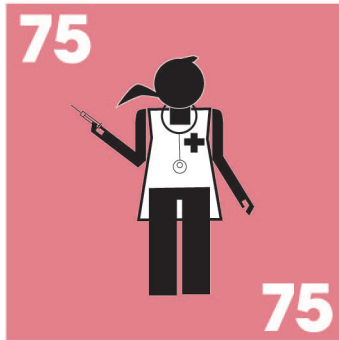


PRINT. CUT. PLAY.

[www.NukedCards.com](http://www.NukedCards.com)



PRINT AT HOME



PRINT. CUT. PLAY.

[www.NukedCards.com](http://www.NukedCards.com)



**NUKED** | PRINT AT HOME



**NUKED**

©2016 NUKED CARDS, LLC



**NUKED**

©2016 NUKED CARDS, LLC



**NUKED**

©2016 NUKED CARDS, LLC



**NUKED**

©2016 NUKED CARDS, LLC



**NUKED**

©2016 NUKED CARDS, LLC



**NUKED**

©2016 NUKED CARDS, LLC



**NUKED**

©2016 NUKED CARDS, LLC



**NUKED**

©2016 NUKED CARDS, LLC



**NUKED**

©2016 NUKED CARDS, LLC



**NUKED**

©2016 NUKED CARDS, LLC



**NUKED**

©2016 NUKED CARDS, LLC



**NUKED**

©2016 NUKED CARDS, LLC



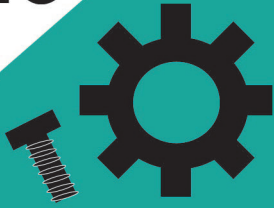
PRINT. CUT. PLAY.

[www.NukedCards.com](http://www.NukedCards.com)

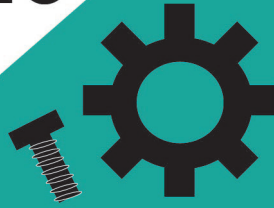


NUKED | PRINT AT HOME

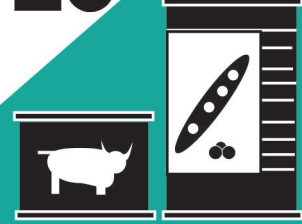
10



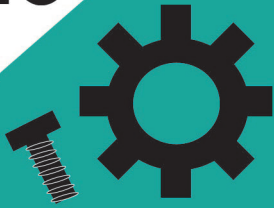
10



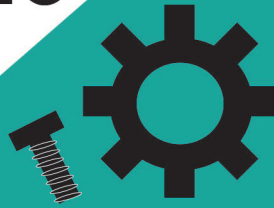
20



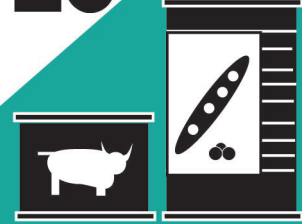
10



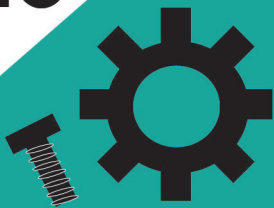
10



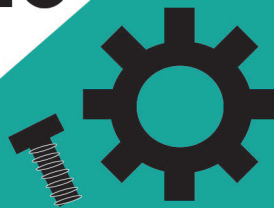
20



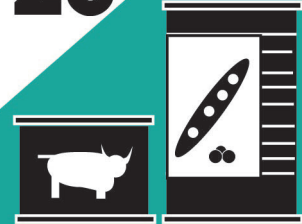
10



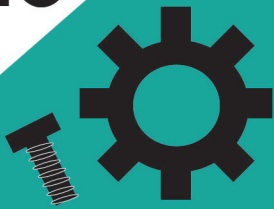
10



20



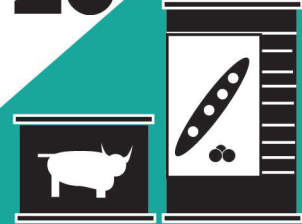
10



20



20



PRINT. CUT. PLAY.

[www.NukedCards.com](http://www.NukedCards.com)



**NUKED** | PRINT AT HOME



**NUKED**

©2016 NUKED CARDS, LLC



**NUKED**

©2016 NUKED CARDS, LLC



**NUKED**

©2016 NUKED CARDS, LLC



**NUKED**

©2016 NUKED CARDS, LLC



**NUKED**

©2016 NUKED CARDS, LLC



**NUKED**

©2016 NUKED CARDS, LLC



**NUKED**

©2016 NUKED CARDS, LLC



**NUKED**

©2016 NUKED CARDS, LLC



**NUKED**

©2016 NUKED CARDS, LLC



**NUKED**

©2016 NUKED CARDS, LLC



**NUKED**

©2016 NUKED CARDS, LLC



**NUKED**

©2016 NUKED CARDS, LLC



PRINT. CUT. PLAY.

[www.NukedCards.com](http://www.NukedCards.com)



NUKED | PRINT AT HOME

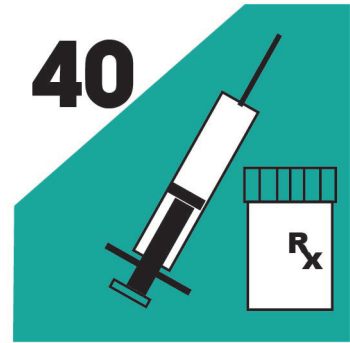
20



20



40



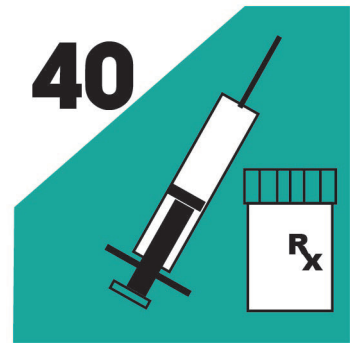
20



20



40



20



20



40



20



40



40



PRINT. CUT. PLAY.

[www.NukedCards.com](http://www.NukedCards.com)





**NUKED** | PRINT AT HOME



**NUKED**

©2016 NUKED CARDS, LLC



**NUKED**

©2016 NUKED CARDS, LLC



**NUKED**

©2016 NUKED CARDS, LLC



**NUKED**

©2016 NUKED CARDS, LLC



**NUKED**

©2016 NUKED CARDS, LLC



**NUKED**

©2016 NUKED CARDS, LLC



**NUKED**

©2016 NUKED CARDS, LLC



**NUKED**

©2016 NUKED CARDS, LLC



**NUKED**

©2016 NUKED CARDS, LLC



**NUKED**

©2016 NUKED CARDS, LLC



**NUKED**

©2016 NUKED CARDS, LLC



**NUKED**

©2016 NUKED CARDS, LLC



PRINT. CUT. PLAY.

[www.NukedCards.com](http://www.NukedCards.com)



NUKED | PRINT AT HOME

60



60



BUNKER



60



BUNKER



SWARM



60



BUNKER



SWARM



60



BUNKER



SWARM



PRINT. CUT. PLAY.

[www.NukedCards.com](http://www.NukedCards.com)



**NUKED** | PRINT AT HOME



**NUKED**

©2016 NUKED CARDS, LLC



**NUKED**

©2016 NUKED CARDS, LLC



**NUKED**

©2016 NUKED CARDS, LLC



**NUKED**

©2016 NUKED CARDS, LLC



**NUKED**

©2016 NUKED CARDS, LLC



**NUKED**

©2016 NUKED CARDS, LLC



**NUKED**

©2016 NUKED CARDS, LLC



**NUKED**

©2016 NUKED CARDS, LLC



**NUKED**

©2016 NUKED CARDS, LLC



**NUKED**

©2016 NUKED CARDS, LLC



**NUKED**

©2016 NUKED CARDS, LLC



**NUKED**

©2016 NUKED CARDS, LLC



PRINT. CUT. PLAY.

[www.NukedCards.com](http://www.NukedCards.com)

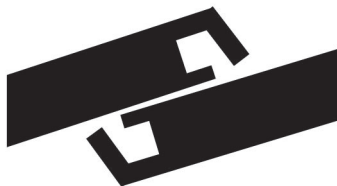


NUKED | PRINT AT HOME

**SWARM**



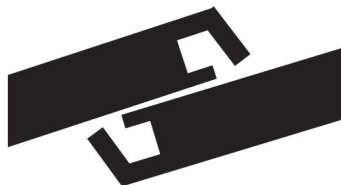
**TRUCE**



**NUKE**



**TRUCE**



**NUKE**



### SETUP

STEP 1: Separate Nuked Cards and Fate Cards, shuffling each.

STEP 2: Deal 5 cards to each player from the Nuked deck.

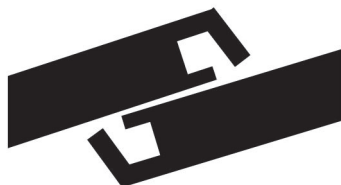
### GAMEPLAY

Players will play a single card from their hand and draw a card at the end of their turn. If the player has no playable cards, they must discard 3 cards from their hand and draw 3 cards from the Nuked deck.

First turn play a supply card. Players must have enough supplies on the table to play a Settler card. Player will discard any Supply cards spent on Settlers into the discard pile. The first player to collect 200 Settler points wins the game.

1

**TRUCE**



**NUKE**



### BUNKER



Protection from Nukes and Swarms for one turn. Discard at beginning of your next turn. Allows player to play any settler card once Bunker is discarded without spending supplies on that turn.

While you are bunkered, you can not play a fate card. No fate card affecting your played cards apply, however your seat and hand are still in play.



Fate cards can be played at any time. One fate card per player per round.

3

**TRUCE**



**NUKE**



**DEALER**



PRINT. CUT. PLAY.

[www.NukedCards.com](http://www.NukedCards.com)



NUKED | PRINT AT HOME



NUKED

©2016 NUKED CARDS, LLC



NUKED

©2016 NUKED CARDS, LLC



NUKED

©2016 NUKED CARDS, LLC



**Supply cards.** Collect these to buy settlers. Sorry, there's no change for overspending supplies, so spend wisely.



**Settler cards.** You need 200 points worth to win (teams need twice as many).



SWARM

Destroys opponent's played supply cards.



NUKE

Destroys opponent's settler and supply cards.



TRUCE

Prevents Nuke. Play this card when a Nuke is played against you to prevent being Nuked.

2



NUKED

©2016 NUKED CARDS, LLC



NUKED

©2016 NUKED CARDS, LLC

### Team play.

Games with more than 4 players might want to team up. Teams of 2 players allow more advanced tactics, as either player is allowed to play a Truce should they get Nuked. The team must collect 400 settlers to win.

### House Rules:

Play it your way. Don't like a rule? Change it! Remember, it's a game and the goal is to have fun!

### BELOW ARE SOME POSSIBLE HOUSE RULES:

**WHO'S TURN IS IT?** : Any player who asks who's turn it is loses their turn.

**GAMBIT:** On your turn, you can choose a settler to represent your settlement in a deathmatch. Choose another player's settler card of equal or lesser value and rock paper scissors them for their card. If you lose, they keep your settler. If you win, you get to keep their settler. If you draw, you lose your turn.

4



NUKED

©2016 NUKED CARDS, LLC



NUKED

©2016 NUKED CARDS, LLC

DEALER



NUKED

©2016 NUKED CARDS, LLC



NUKED

©2016 NUKED CARDS, LLC



PRINT. CUT. PLAY.

[www.NukedCards.com](http://www.NukedCards.com)



NUKED | PRINT AT HOME



### HOSTILE TAKEOVER

Trade seats with  
another player



### ROBOT'S REVOLT

Discard all your  
robot settlers



### HOSTAGE EXCHANGE

Give a settler  
card to player to  
your left



### DOUBLE AGENT

Trade hands with  
another player



### SURPRISE ATTACK

Discard a settler  
card



### SUPPLY CACHE FOUND

Play any settler  
card



### DOUBLE AGENT

Trade hands with  
another player



### SURPRISE ATTACK

Discard a settler  
card



### SUPPLY CACHE FOUND

Play any settler  
card



### ROBOT'S REVOLT

Discard all your  
robot settlers



### HOSTAGE EXCHANGE

Give a settler  
card to player to  
your left



### REPROGRAM

Take any one  
player's robot  
settler



PRINT. CUT. PLAY.

[www.NukedCards.com](http://www.NukedCards.com)



NUKED | PRINT AT HOME



**FATE  
CARDS**



**FATE  
CARDS**



**FATE  
CARDS**



**FATE  
CARDS**



**FATE  
CARDS**



**FATE  
CARDS**



**FATE  
CARDS**



**FATE  
CARDS**



**FATE  
CARDS**



**FATE  
CARDS**



**FATE  
CARDS**



**FATE  
CARDS**



PRINT. CUT. PLAY.

[www.NukedCards.com](http://www.NukedCards.com)



NUKED | PRINT AT HOME



**CONTAGIOUS  
PATIENT**

Discard your  
doctor card



**YOU'RE A BAD  
LEADER**

Everyone but you  
play a settler card



**REGROUP**

Skip your next  
turn



**RAIDING  
PARTY**

Take any other  
player's supply  
card



**YOU'RE A GOOD  
LEADER**

Everyone but you  
discard a settler  
card



**REGROUP**

Skip your next  
turn



**RAIDING  
PARTY**

Take any other  
player's supply  
card



**RAIDING  
PARTY**

Take any other  
player's supply  
card



**SUPPLY  
TAINTED**

Discard a supply  
card



**RAIDING  
PARTY**

Take any other  
player's supply  
card



**TACTICAL  
STRIKE**

Discard another  
player's settler  
card



**SUPPLY  
TAINTED**

Discard a supply  
card



PRINT. CUT. PLAY.

[www.NukedCards.com](http://www.NukedCards.com)





NUKED | PRINT AT HOME



**FATE  
CARDS**



**FATE  
CARDS**



**FATE  
CARDS**



**FATE  
CARDS**



**FATE  
CARDS**



**FATE  
CARDS**



**FATE  
CARDS**



**FATE  
CARDS**



**FATE  
CARDS**



**FATE  
CARDS**



**FATE  
CARDS**



**FATE  
CARDS**



PRINT. CUT. PLAY.

[www.NukedCards.com](http://www.NukedCards.com)